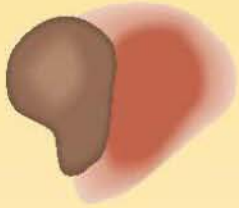
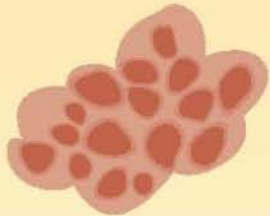


Skin Cancer - ABCDE Test



A—Asymmetry: Is one half unlike the other?



B—Border irregularity: Does it have an uneven, scalloped edge rather than a clearly defined border?



C—Color variation: Is the color uniform, or does it vary from one area to another, from tan to brown to black, or from white to red to blue?



D—Diameter larger than $\frac{1}{4}$ inch: At its widest point, is the growth as large as, or larger than, a pencil eraser?

E – Elevation: Is it raised above the skin surface?